



Seger Park Dog Owners Association Newsletter

Philadelphia, PA

www.segerdogpark.org

Spring/Summer 2006

We Did It!

After much planning, prodding and patience, we have finally completed the dramatic renovations we began dreaming about in 2003. The finishing touch is the fancy red fountain in the east end of the park.

Many thanks to all of our donors and volunteers, and especially to Larry Levin who has led the project (first as president, and then as a Board member) from start to finish.

Thanks also to all those who helped with our Spring clean up in April, and all the new members who joined SPDOA in May.

Did you know...

...that Seger Dog Park is brought to you through a partnership of the City of Philadelphia and the **Seeger Park Dog Owners Association (SPDOA)**. SPDOA is a non-profit volunteer organization made up of individuals who support, manage and maintain the dog run for the benefit of the community. What can you do to pitch in?

▪ Do your part!

While you're in the park, please do your part to keep it clean and safe. Keep an eye on your dog, so that you can easily pick up after him/her and address any behavior that could make others uncomfortable.

Speak up if you see others not acting responsibly or if you are uncomfortable with any activity in the dog run.

▪ Become a member!

For \$25 a year, you can support the dog run and the SPDOA. You can join at our website (click on "Make a Donation" and include your address, e-mail, phone and the name of your dog) or by picking up a form from the mailbox on the bulletin board. We had more than 20 new members join in May!

▪ Get involved!

The next SPDOA meeting is Thursday, June 15 at 7:30 in the Seger Rec Center (entrance near the driveway on Lombard Street). We're looking for some new ideas for a fall event and other projects – please join us.

We're also looking for a few new officers – we have open positions for:

- Secretary – attends monthly meetings and records decisions of the Board/Officers. Assists with communication to SPDOA and other community members
- Vice President of Operations – works with SPDOA members, vendors and the Board/Officers to maintain and improve the dog run.

Places and Parks that Will Get that Tail Wagging!

Try these local parks for a little variety this summer. Dogs must be on leash except where specifically designated at these sites.

[Fort Washington State Park](#) – Bethlehem Pike, Fort Washington

[Ben Franklin Parkway](#) – Ben Franklin Parkway and 19th

[Deshler-Morris House National Park](#) – 5442 Germantown Ave

[Fairmount Park](#) – 4231 N. Concourse Dr.

[Independence National Historical Park](#) – 143 S 3rd St.

[Manuyunk Towpath and Canal](#) – Main St.

[Pennypack Park](#) – Algon and Bustleton Aves.

[Rittenhouse Square Park](#) – Walnut and 18th

[Washington Square Park](#) – Walnut and 6th

For more ideas, check out: www.dogfriendly.com or "The 55 Best Places to Hike with Your Dog in the Philadelphia Region" by Doug Gelbert (Cruden Bay Books: Montchanin, DE)

The next dog blood drive to benefit the UPenn Veterinary Hospital will be Saturday, June 10. If your dog is between 1 and 8 years of age, over 50 lbs and not on any medication besides heartworm, please contact Cindy Fishman at cindy.e.fishman@gsk.com or 215-922-0357 (Sorry, donations not accepted from pit-bull mixes due to a breed-specific parasite that is harmful to other breeds.)



Zadie's Zeasonal Zuggestions

Keep your dog safe, healthy, and happy this summer by remembering a few essential facts!

Heartworm prevention – Heartworms are carried by mosquitoes and can cause a fatal infestation. Protecting your dog is very easy with a chewable tablet once a month. Your dog will need a simple blood test before you start or if you have missed more than one month of treatment. Several companies sell heartworm preventatives – **Heartguard** and **Interceptor** are equally protective against heartworm and other intestinal parasite and can both be given like treats. If your dog has a sensitive stomach and reacts badly to these tablets you can use **Revolution** – a monthly topical medication that protects against fleas, ticks, and heartworm. Which brings us to...

Flea and tick prevention – Anyone who's had fleas knows they're much easier to prevent than to get rid of! Ticks can carry a number of diseases, including Lyme disease. Keep in mind, however, that a tick must be attached to your dog for at least 48 hours to transmit Lyme disease. So to prevent Lyme diseases, use a monthly topical treatment, such as:

- **Advantage** – kills fleas very quickly but does not kill ticks.
- **Frontline** – very good flea and tick protection, but ticks may attach for several hours before they are killed.
- **Advantix** – excellent flea and tick protection, and also repels mosquitoes. Do not use this product if you have cats in your household, as cats can have a severe reaction to one of the ingredients!

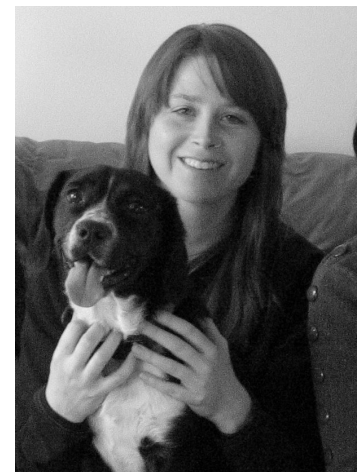
- **Revolution** – as mentioned above, prevents fleas, ticks, and heartworm, but only protects against one species of tick.

There is also the **Preventic collar**, which works well for tick prevention, but can have toxic side effects if ingested. Beware of over-the-counter products and flea collars – they may not be effective and can cause severe allergic reactions, especially in cats. Also, be sure to check your dog for ticks after a day of frolicking in the woods.

Give your dog plenty of cool water on long walks and at the park. Be careful about puddles, as standing water can harbor parasites and bacteria. Do not leave your dog in a parked car, even if you think it isn't too hot outside. Dogs can suffer from heatstroke, which can be deadly, so prevent overexertion during very hot weather.

Make sure your puppy is fully vaccinated before you go places with other dogs. This should be completed around 4 months of age. Standard combination vaccines protect dogs against several highly contagious and potentially fatal diseases, including parvovirus, which has an increased incidence in the summer.

Your dog will be healthier and safer by being spayed or neutered. Un-neutered male dogs are more likely to wander and to have deadly encounters with cars and trucks. Un-spayed females have a much higher risk of developing mammary cancer and fatal uterine infections.



-- Laurel Frydenborg, DVM

Special thanks to Ryan Rose (Maggie's dad) for installing our new bulletin board cover.